

Rental indices

Rode's shopping-centre rental indices

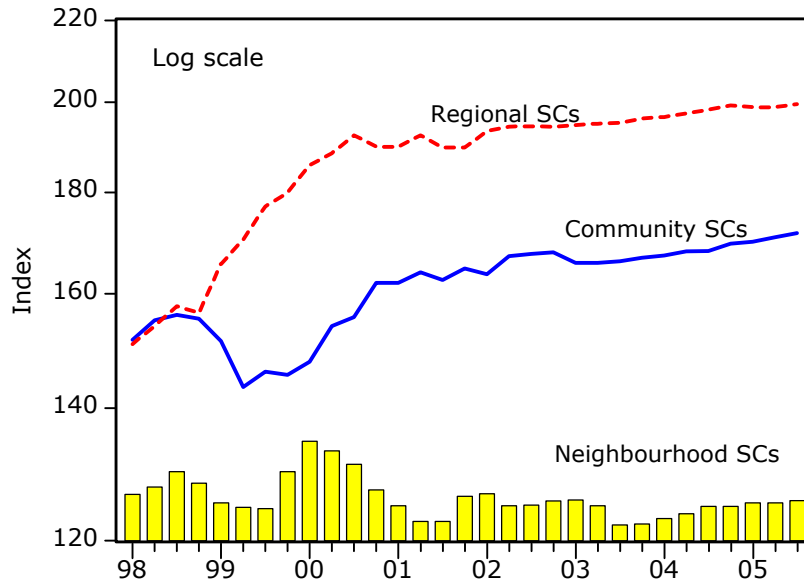
Shopping-centre rental indices (1995:1 = 100)

Regional shopping centers								
	03:4	04:1	04:2	04:3	04:4	05:1	05:2	05:3
Reef	150,5	150,5	150,5	150,5	150,5	150,5	150,5	150,5
Pretoria	207,0	207,0	207,0	207,0	207,0	207,0	207,0	207,0
Durban / Pietermaritzburg	209,1	209,1	209,1	209,1	209,1	209,1	209,1	209,1
Cape Peninsula	210,4	213,8	218,2	220,0	224,0	224,0	224,0	224,0
Port Elizabeth	163,2	163,2	163,2	169,8	176,1	171,7	171,7	171,7
National	196,2	196,5	197,3	198,2	199,2	198,8	198,8	199,5
Community shopping centres								
	03:4	04:1	04:2	04:3	04:4	05:1	05:2	05:3
Reef	206,1	206,1	206,1	206,1	206,1	206,1	206,1	206,1
Pretoria	144,9	144,9	144,9	144,9	144,9	145,6	145,6	145,6
Durban / Pietermaritzburg	157,4	157,4	157,4	157,4	157,4	155,3	155,3	155,3
Cape Peninsula	220,7	220,7	220,7	220,7	220,7	220,7	220,7	220,7
Eastern Cape	209,4	207,7	212,2	216,0	215,9	219,5	229,3	229,3
Bloemfontein	178,0	180,6	185,8	182,8	199,2	201,4	201,4	211,2
National	166,8	167,2	168,1	168,2	169,6	170,0	170,8	171,7
Neighbourhood shopping centres								
	03:4	04:1	04:2	04:3	04:4	05:1	05:2	05:3
Reef	144,5	155,6	155,6	155,6	155,6	155,6	155,6	155,6
Pretoria	134,8	134,8	139,8	139,8	139,8	139,8	139,8	139,8
Durban / Pietermaritzburg	138,9	138,9	138,9	138,9	138,9	138,9	138,9	141,4
Cape Peninsula	177,3	177,3	177,3	177,3	177,3	177,3	177,3	177,3
Port Elizabeth	105,8	105,8	105,8	113,3	113,3	117,3	117,3	117,3
National	122,3	123,1	123,8	124,9	124,9	125,4	125,4	125,7

2005:3 figures should be treated as provisional

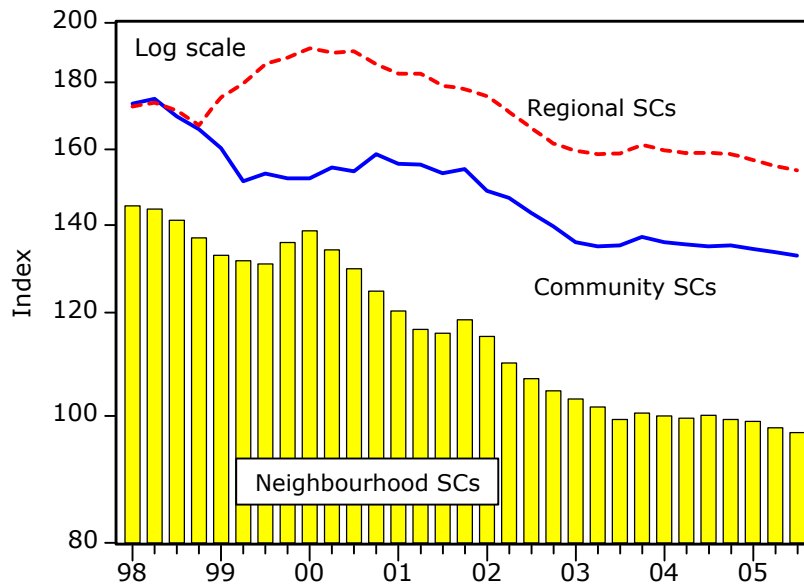
Rode's shopping-centre rentals indices (continued)

Shopping centre rentals
Indices based on rentals for 100m² areas
Quarter 1995:1 = 100



Source: Rode's Database

Real shopping centre rentals
Indices based on rentals for 100 m² areas
Quarter 1995:1 = 100



Source: Rode's Database

Rode's street-front shop-rentals indices Selected areas

Rode's street-front shop-rental index Based on 100m² premises 1995:1 = 100

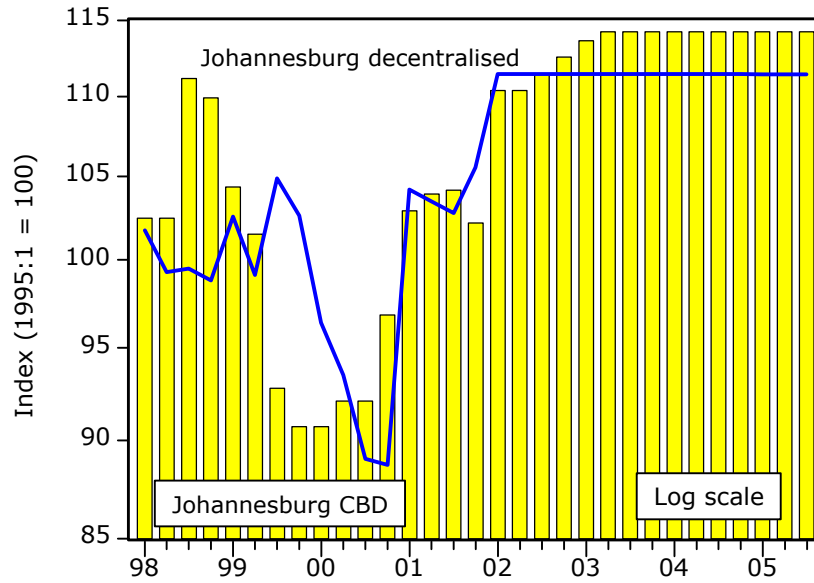
	03:2	03:3	03:4	04:1	04:2	04:3	04:4	05:1	05:2	05:3
Johannesburg										
CBD	114,2	114,2	114,2	114,2	114,2	114,2	114,2	114,2	114,2	114,2
Dec.	111,4	111,4	111,4	111,4	111,4	111,4	111,4	111,4	111,4	111,4
Pretoria										
CBD	157,0	160,2	163,4	166,6	178,0	178,0	177,1	178,0	178,0	178,0
Dec.	112,8	115,0	117,2	119,4	125,9	125,9	125,9	122,8	120,3	120,3
Durban										
CBD	126,0	126,0	126,3	126,3	126,3	126,3	126,3	126,3	126,3	126,3
Dec.	205,2	205,2	205,2	208,0	208,0	208,0	208,0	208,0	208,0	208,0
Cape Town										
CBD	157,6	157,6	157,6	157,6	172,5	172,5	174,4	174,5	174,5	174,5
Dec.	136,4	136,4	151,1	151,1	151,3	152,7	152,7	152,3	153,1	153,2
Port Elizabeth										
CBD	152,6	152,6	154,4	154,4	159,9	157,2	159,9	168,6	171,9	171,9
Bloemfontein										
CBD	94,9	96,2	97,5	90,4	93,5	96,5	101,6	95,1	100,5	105,2
East London										
CBD	153,8	153,8	153,8	153,8	153,8	153,8	153,8	153,8	153,8	153,8
National										
CBD	141,5	142,1	143,2	143,8	150,2	149,6	150,4	152,3	153,0	153,0
Dec.	141,5	142,0	146,2	147,5	149,2	149,5	149,5	148,6	148,2	148,3

Dec. = Decentralised nodes

2005:3 figures should be treated as provisional

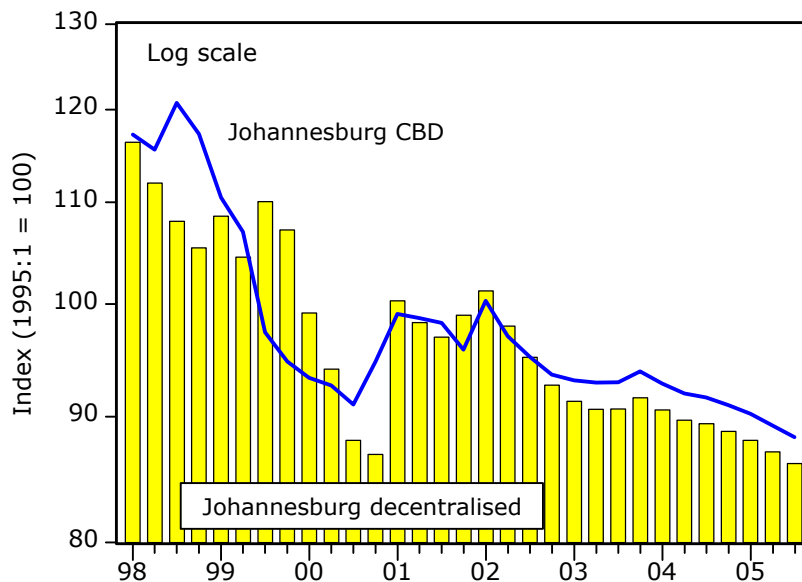
**Rode's street-front shop-rentals indices
Selected areas (continued)**

**Street-front shop rental index
(Indices based on rentals for 100m² areas)**



Source: Rode's Database

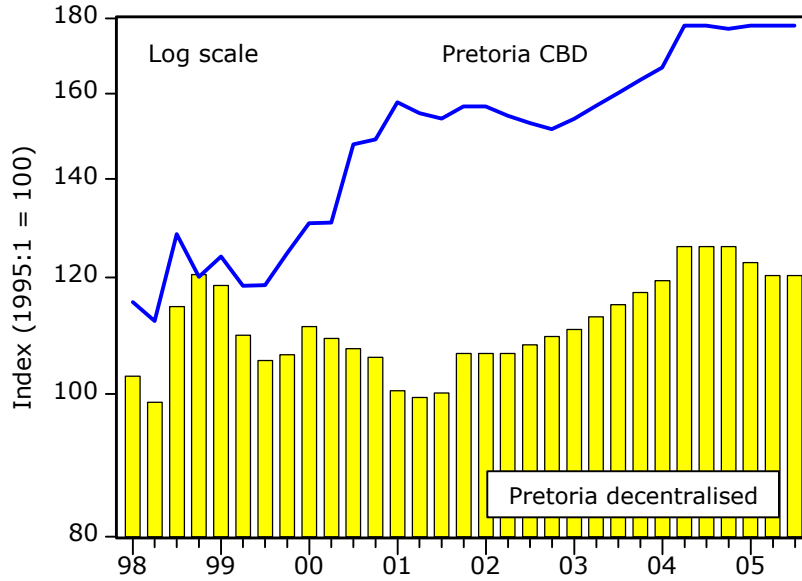
**Real street-front shop rental index
(Indices based on rentals for 100m² areas)
Deflated by CPI**



Source: Rode's Database

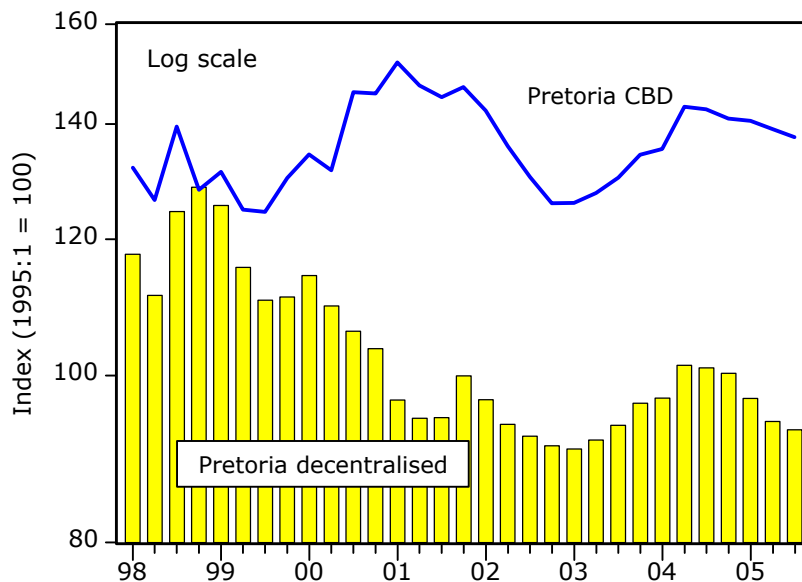
**Rode's street-front shop-rentals indices
Selected areas (continued)**

**Street-front shop rental index
(Indices based on rentals for 100m² areas)**



Source: Rode's Database

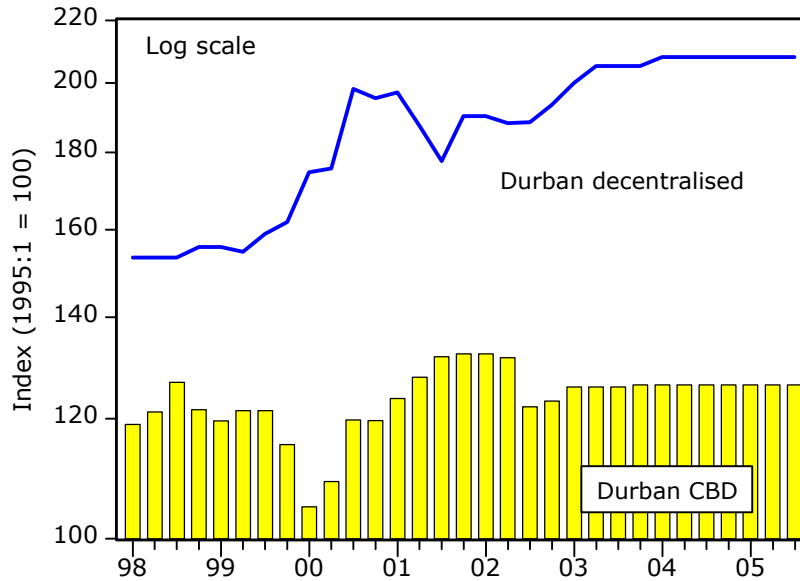
**Real street-front shop rental index
(Indices based on rentals for 100m² areas)
Deflated by CPI**



Source: Rode's Database

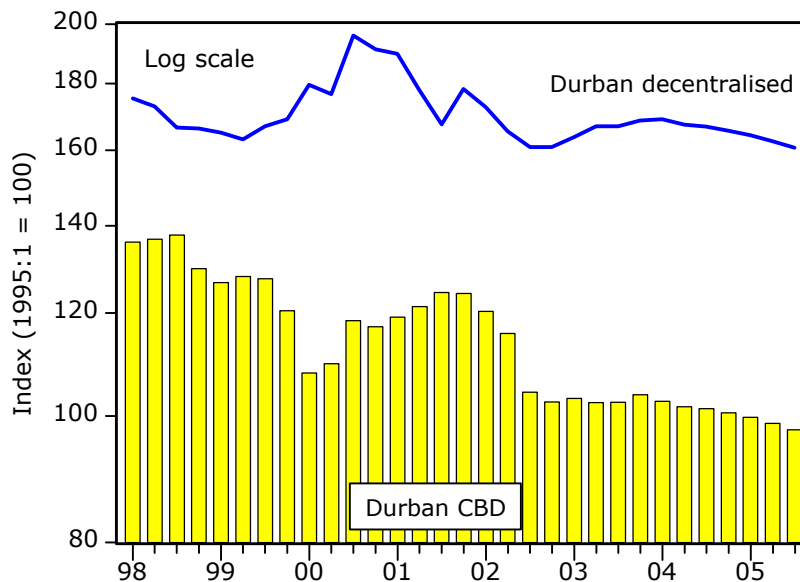
**Rode's street-front shop-rentals indices
Selected areas (continued)**

**Street-front shop rental index
(Indices based on rentals for 100m² areas)**



Source: Rode's Database

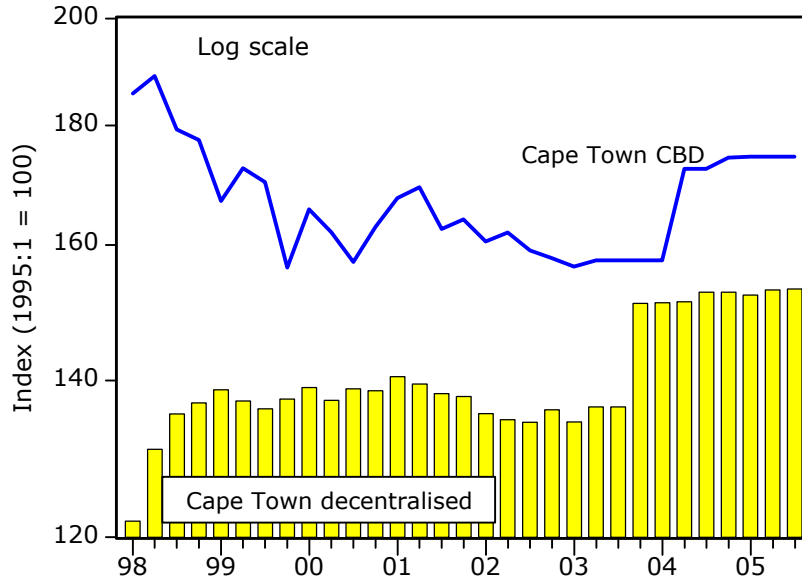
**Real street-front shop rental index
(Indices based on rentals for 100m² areas)
Deflated by CPI**



Source: Rode's Database

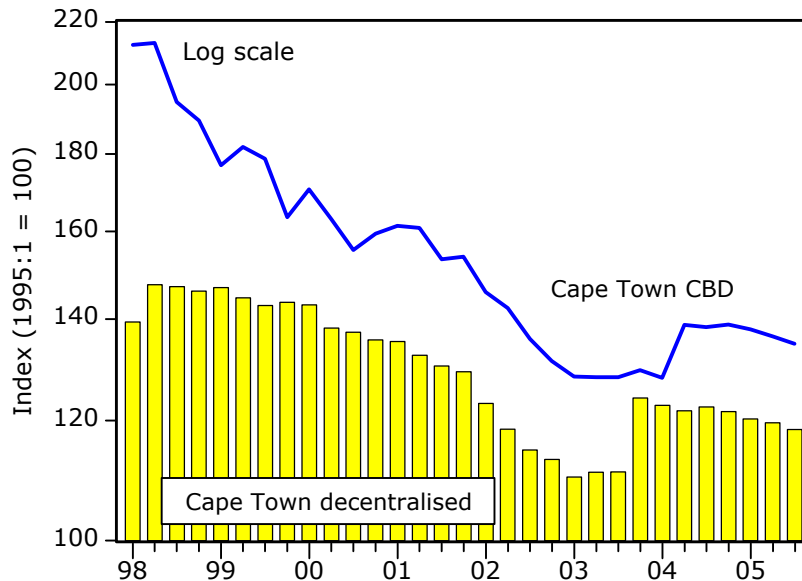
**Rode's street-front shop-rentals indices
Selected areas (continued)**

**Street-front shop rental index
(Indices based on rentals for 100m² areas)**



Source: Rode's Database

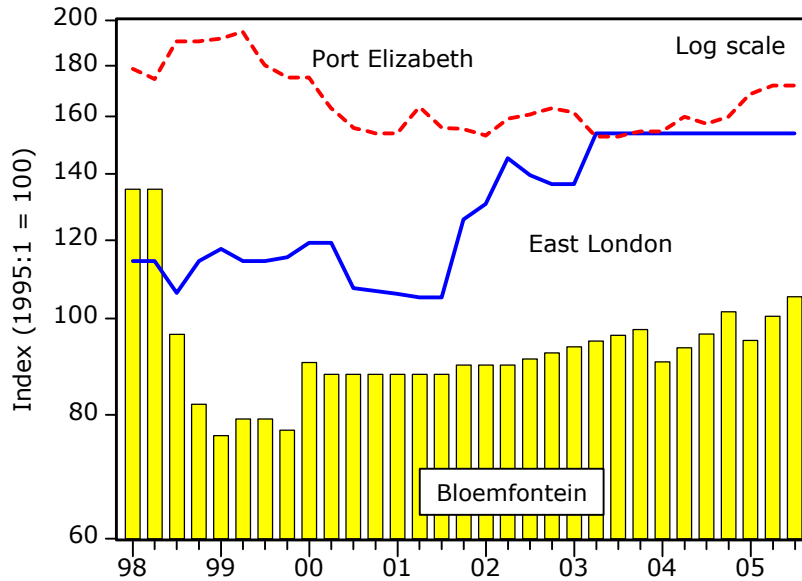
**Real street-front shop rental index
(Indices based on rentals for 100m² areas)
Deflated by CPI**



Source: Rode's Database

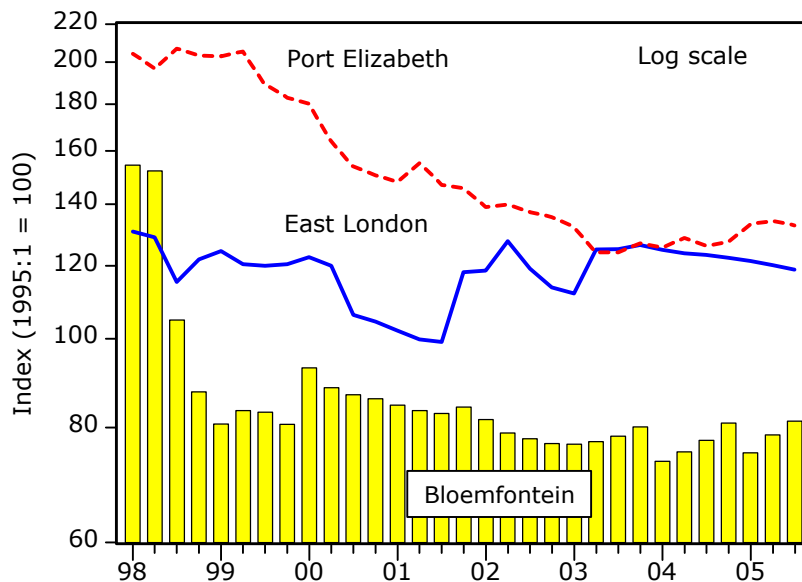
**Rode's street-front shop-rentals indices
Selected areas (continued)**

**Street-front shop rental index
(Indices based on rentals for 100m² areas)**



Source: Rode's Database

**Real street-front shop rental index
(Indices based on rentals for 100m² areas)
Deflated by CPI**



Source: Rode's Database